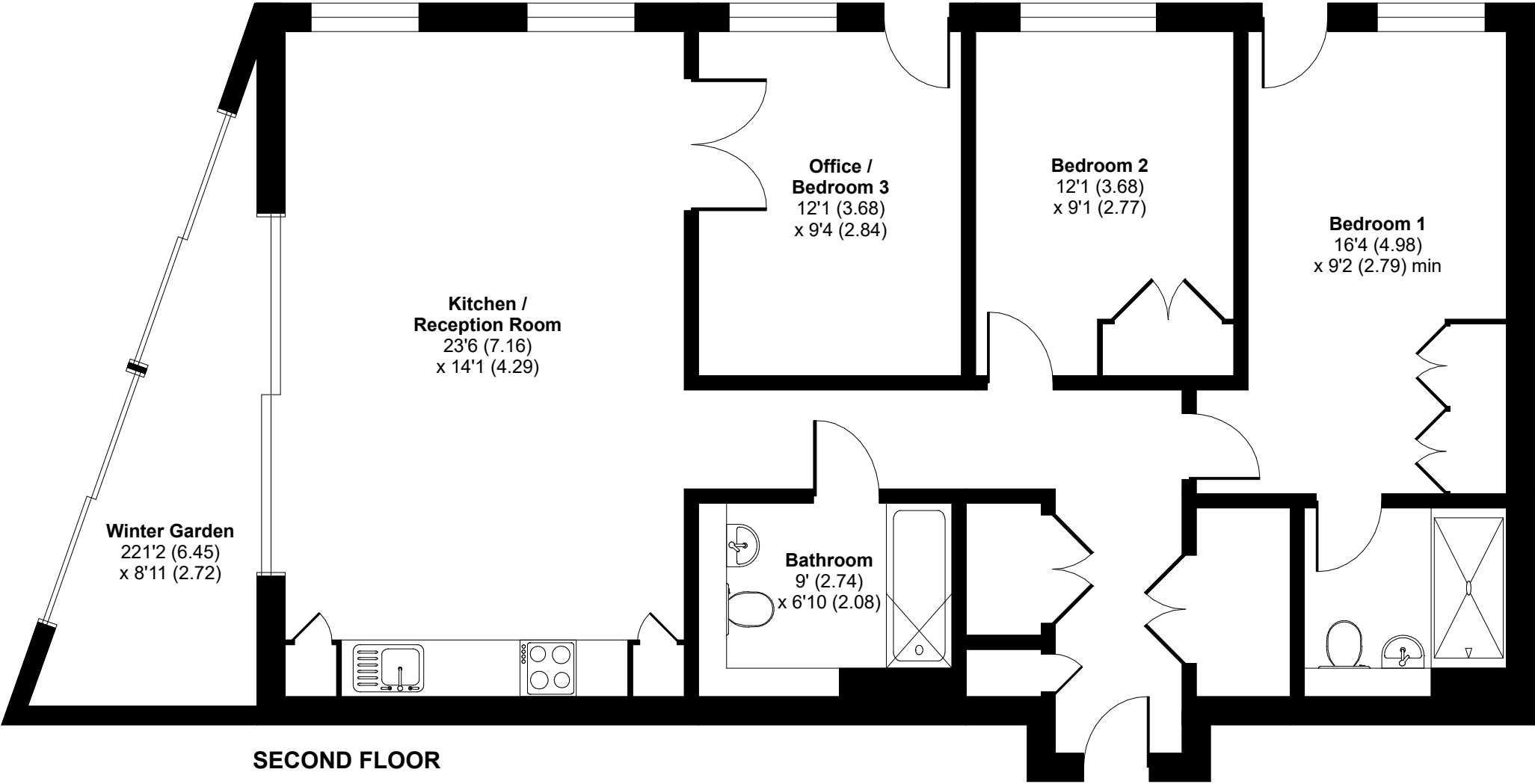


# Southwark Bridge Road, London, SE1

Approximate Area = 1027 sq ft / 95.4 sq m

For identification only - Not to scale



Floor plan produced in accordance with RICS Property Measurement Standards incorporating International Property Measurement Standards (IPMS2 Residential). © n̄checon 2026. Produced for Onyx Property Consultants Ltd. REF: 1479112